



# Lookbox *annual* 2014



LOOKBOXLIVING.COM.SG

**34**  
**TOP  
INTERIOR  
DESIGN  
FIRMS**  
**+182 pages of  
inspirational spaces**



**THE CUT**  
Furniture & Fittings



**MATERIAL  
MAGIC**  
Mix & Match Finishes



**DRESS UP**  
Easy decoration tips  
from stylists



# Rhiss Interior

Since 2005, Rhiss Interior has been cultivating a strong reputation for its quality designs and wholesome service standards. The word-of-mouth surrounding this eight-strong team of designers has always been glowing, and this has led to a constant stream of referral clients and repeat customers. *When it comes to aesthetics, Rhiss Interior persistently strives to offer designs with a difference.*

## RECENT HIGHLIGHTS

- Received the 2013/2014 SMEs Asia Award Singapore
- Received the Asia Pacific Brands Award for Singapore Finest Coup D' Established in 2013



**PROJECT TYPE** Shophouse

**FLOOR AREA** 800 sqft

The interior of this charming shophouse was given a new lease of life. The designers were challenged by the limitation of space, but they came up with the idea of using various textures and finishes for a unique look.



From left  
**RAY CHU**  
 Senior Design Consultant  
**SAM TAN**  
 Design Consultant  
**WENCY TANG**  
 Principal Designer  
**JACKY CHAN**  
 Senior Design Consultant

## THE EXPERTS WEIGH IN On The List

It's good to have a wishlist before you meet up with a designer. Write down the important things you would need to have in your new house; even the smallest details can be helpful. Do you need a TV in your bedroom? Do you like to have gatherings at home? Do you need a spare bedroom for your parents if they stay over?

## Material Magic

Need to tighten the purse strings? You can substitute certain materials and get a similar look. The effect is different, nonetheless, but it might help to lighten the bill. For example, use paint instead of wallpaper. There are so many materials to choose from, and you might find something of similar quality but at a better price.

## Visual Necessity

Mirrors can make a lot of difference to an interior design. For one, it makes a room look bigger and brighter. And when used in the correct space, it can reflect an existing feature so it looks like you have two of them.





# > Portfolio

## PROJECT TYPE

Penthouse condominium

## FLOOR AREA

3,089 sqft

This luxury penthouse condominium is home to a bachelor with exquisite taste and a penchant for strong, masculine glamour. The *Rhiss Interior* design team crafted a home that manages to accommodate his opulent taste without making the interior look too over-the-top. A monochromatic colour scheme is coupled with clean designs and then complemented by luxury furniture and finishings for a lavish home that lives up to its owner's expectations.



### What's On Display

A grand dining table stretches across this room, easily accommodating a dinner party for ten guests. The designers managed to replicate the air of sophistication that is typically found in fine dining restaurants. Complementing the dining set is a series of niche shelves on the wall, which the owner can use as display alcoves.



### Bold Entrance

The design team built this partition so that it's the first thing you see as you enter the apartment. It's clad in black wallpaper and adorned with gold-plated butterflies that are screwed to the wall.



### Strong And Masculine

The living room on the first floor of this penthouse was designed to bring about a sense of sophisticated glamour. In sticking with the homeowner's request for a masculine monochrome look, the designers started with a blank canvas that is made up of black walls and white floors. The room was then filled with furniture, accessories and soft furnishings that give the space a cosy yet elegant look.







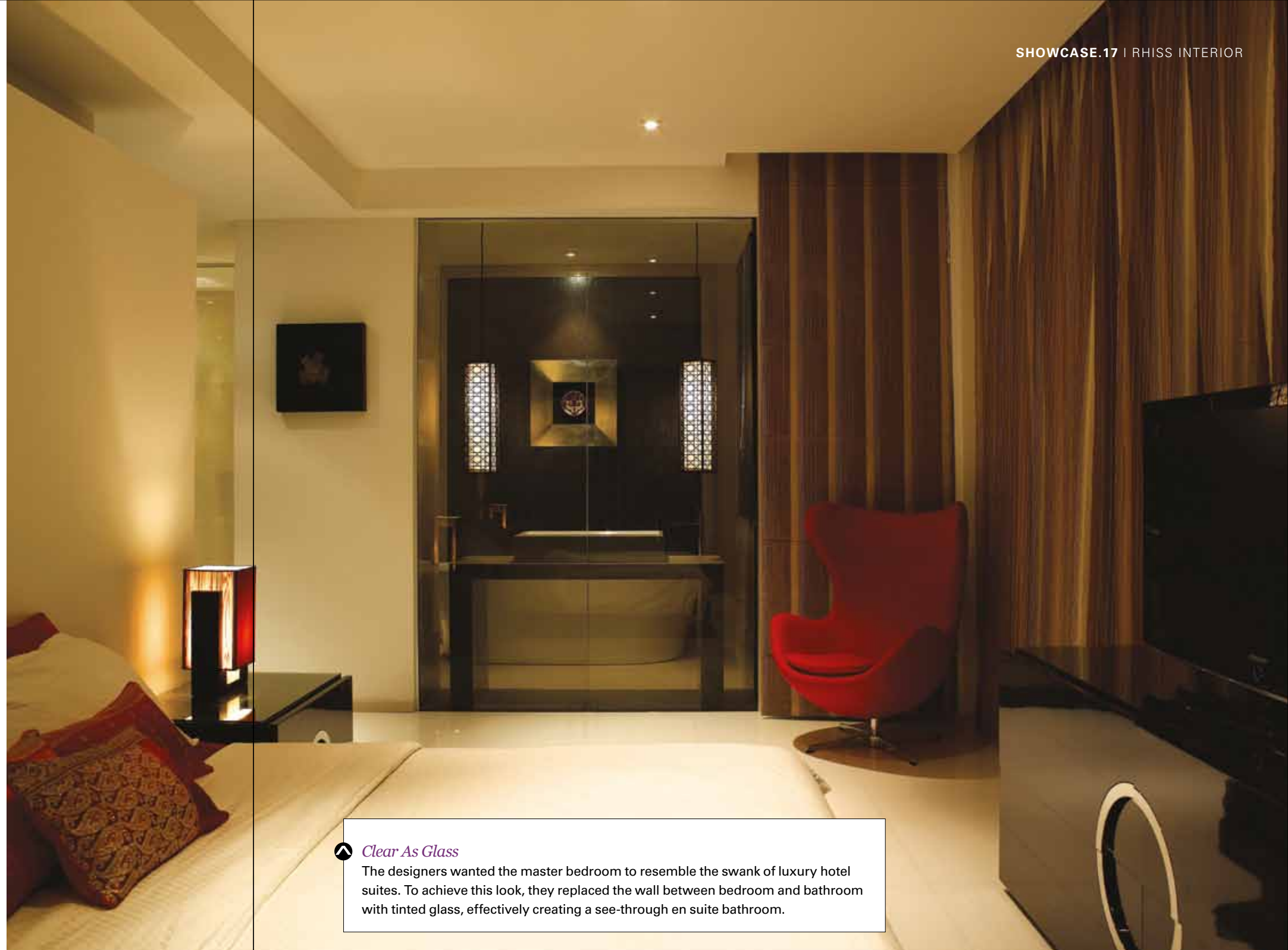
**Cosy Up**

The family hall on the second floor is the perfect place for the homeowner to invite friends and family to relax and unwind in. Here, the designers downplayed the monochromatic glamour from the other rooms. Instead, a more relaxed vibe is evident, with warmer colour tones and cosier ambience.



**Piece By Piece**

Because of the size of the master bathroom, the designers could accommodate a bathtub and a separate shower stall. Particularly of note is the mosaic wall behind the cistern, which was custom-made with different coloured tiles to create a gradient effect.



**Clear As Glass**

The designers wanted the master bedroom to resemble the swank of luxury hotel suites. To achieve this look, they replaced the wall between bedroom and bathroom with tinted glass, effectively creating a see-through en suite bathroom.

*“The owner asked for a smart home with fully automated systems. So we installed motorised curtains, lights and other technology that increase the standard of living in this penthouse apartment.”*

Eddie Yeo, Director

**RHISS INTERIOR PTE LTD**

1 Balestier Road  
Singapore 329670  
T (65) 6392 2282  
F (65) 6392 2232

enquiry@rhissinterior.com  
www.rhissinterior.com  
www.rhissinterior.com.sg

**RHISS INTERIOR**  
*Interpreting Perfection*