



# Lookbox *annual* 2015

# 40

## TOP INTERIOR DESIGN FIRMS

260 pages of ideas  
for the perfect home  
in Singapore



+ A bumper product guide for  
furniture, accessories and fittings



From left  
**RAY CHUA**  
Senior Design Consultant  
**WINCY TANG**  
Principal Designer  
**SAM TAN**  
Design Consultant  
**JERROLD LEE**  
Design Consultant

# RHISS



# INTERIOR

## GALLERY

*Rhiss Interior is not a fan of blindly following trends. In fact principal designer Wincy Tang says that the company actively looks for new design ideas rather than blatantly replicating a popular, on-trend look. In the last couple of years, Rhiss Interior has produced homes that are distinctively different from their neighbours: darker, moodier interiors that are boldly swathed in blacks, greys and other masculine hues.*

“When we first started doing these dark, all-black homes, people thought we were crazy,” says a smiling Wincy. “But now, more homes are taking on a darker colour scheme.” The company’s habit of going against the grain has lent to its reputation as a trendsetter. And as expected, Rhiss Interior is already looking for a new signature style to keep itself ahead of the pack.

“We’ve been around for almost nine years, so it’s time for us to take a more matured approach to design. We want to bring in new elements and we’re exploring new ways to express our creativity,” Wincy offers. The boutique design firm has a brand new showroom at Serangoon Road and hopes that its new design direction will appeal to a new generation of younger homeowners. But with all the changes planned out for 2015, Rhiss Interior still believes in the factors that have contributed to its success. “Our designs are always personal,” Wincy reveals, “and the homes we design actually look like homes and not showflats. That’s the secret to our designs... to put it simply, it’s that personal touch that no one else can replicate.”



Dark hues, soft textures and warm interiors are the calling cards of Rhiss Interior’s flair for dramatic yet romantic interiors.



Expect big changes for Rhiss Interior in 2015 as the design firm moves into a new showroom and bolsters its ranks with new designers



PROJECT DETAILS 4-BEDROOM CONDOMINIUM, 1,850SQFT

Designing a 4-bedroom apartment to comfortably fit a family of five (three of whom are teenagers) is no easy feat, but a challenge willingly taken on by Rhiss Interior. To accommodate the different generations, the design firm went with a contemporary design with sleek and modern interiors. This was then accentuated with design features like customised mirror panels and one-of-a-kind lighting features.



Notably, the leaf motif on the walls that flank the television panel in the living room are made from MDF boards with a spray paint finish. These boards are backlit by strips of LED lights that throw beautiful shadows and reflections on the ceiling and floor.



A mirror feature wall is a common sight in many dining rooms, which led to Rhiss Interior's decision to come up with something more inspired. Geometric shapes were carefully cut out from a single mirror panel and when mounted on the wall, leave a lasting impression on dinner guests.



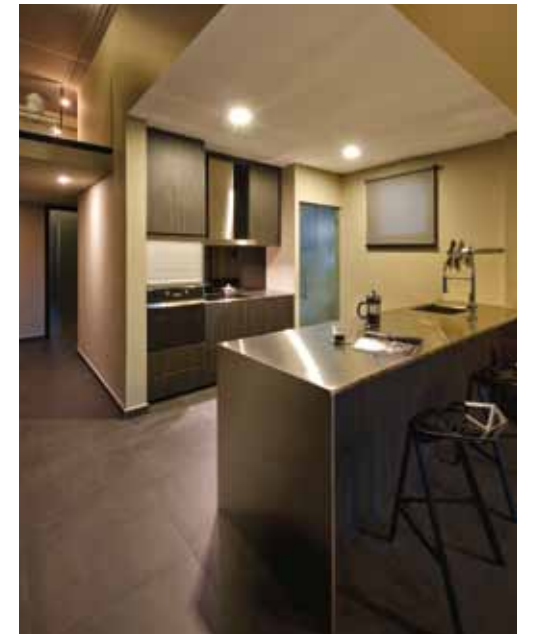
A large, clear glass wall separates the master bedroom from the attached bathroom – an existing feature of the apartments in this condominium. To minimise the lack of privacy, Rhiss Interior designed the bed in such a way that the bedhead cleverly blocks a considerable portion of the glass window.



The spacious master bathroom is a thing of beauty, all decked out in glass and mirrors. To complement the existing design of this room, Rhiss Interior designed a dressing table next to the entrance. The designers also built a top-hung mirror cabinet for storage.







The owners of this apartment are fans of the industrial look but they wanted to lace it with a dose of polish and modernity, resulting in the “industrial chic” look of this home. One of the most prominent features is the loft space in the living room, made possible with the high volume ceiling.



As with the rest of the apartment, the living room is dressed in dark tones like black, chestnut and dusty grey. This palette was chosen to give off an industrial yet avant-garde look, as per the homeowner’s requests. This room in particular, makes a bold statement with its concrete grey feature wall, dissected by thin, black strips.

**PROJECT DETAILS** 2-BEDROOM CONDOMINIUM, 1,098SQFT

Most homeowners prefer to err on the safe side, which explains the popularity of simple, all-white interiors. Rhiss Interior however, has a penchant for darker shades and moody interiors. When done well, as in the case of this 2-bedroom condominium apartment, the home bears a mellow ambience with a romantic glow. This home in particular hits all the right spots with its handsome interiors built from steel, glass and monochromatic shades.



As with the rest of the apartment, the living room is dressed in dark tones like black, chestnut and dusty grey. This palette was chosen to give off an industrial yet avant-garde look. This room in particular, makes a bold statement with its concrete grey feature wall, dissected by thin, black strips.



Bedrooms typically remain a functional space, with the focus mainly set on getting the mood right. For this home, Rhiss Interior wanted to bring something different to the bedroom design, so they introduced metallic wallpaper, sourced straight from Japan, onto the walls.



**RHISS INTERIOR PTE LTD**

1104 Serangoon Road  
Singapore 328197  
T (65) 6392 2282  
F (65) 6392 2232

enquiry@rhissinterior.com  
www.rhissinterior.com  
www.rhissinterior.com.sg  
www.yamdesign.com.sg

**RHISS INTERIOR**  
*Integrating Perfection*