

Lookbox *annual* 2016

READERS' CHOICE COVER
We listened – and put your favourite design on the cover!



A product gallery of the top furniture, accessories and materials

A handy renovation guide with useful checklists and tips

144

PAGES OF HOME INTERIORS

to inspire your own revamp



RHISS INTERIOR

Design grows and evolves over the years. Whether it's fashion design or interior design, it's natural for trends to ebb and flow, and evolve with the needs of the society. Similarly an interior design company should also progress and evolve over the years. Rhiss Interior is one such example, having undergone a drastic change in design direction, and with great success.

For the last ten years, Rhiss Interior has designed homes that embrace colours from the darker end of the spectrum. Creative Director Wincy Tang and her team of designers have made a name for themselves with a remarkable portfolio of homes that are more sophisticated, deeply sensual, and with a tinge of refined romanticism – all swathed in shades of black and grey.

In 2015, however, the design company underwent vast changes starting with a move to a brand new showroom at Serangoon Road and a completely new design direction. Nowadays, Rhiss Interior designs homes with “natural beauty”, defined by brightly lit interiors, an organic material palette, sleek lines and a natural disposition for sunshine and cheer. It's a 360-degree turn from the design look that they've built their reputation around, but it doesn't mean that the design firm's past experience and expertise have been completely disregarded. You can still see the influence in the design elements of each interior project they take on.

“It's a big change,” Wincy admits, but points out that it's necessary for interior designers to constantly adapt and evolve in this fast-paced industry. She likens their evolution to the process of an adolescent maturing to a young adult. “A lot of teenagers go through a ‘dark and gloomy’ phase, but they grow out of it as they mature. But even as adults, they still have lingering influences from their youth. It's the same thing with us,” she explains, semi-jokingly. “We've been around for more than ten years, and it's about time we broke out of the mould and offer something different.”

“We like to describe our design direction as one that emphasises ‘natural beauty’. It's a look that that you can't wait to come home to after a long day at work.”

Wincy Tang, Creative Director



(Left) Rhiss Interior places utmost importance in materials selection, as seen in its varied portfolio.

(Top) With a slew of awards to its name, Rhiss Interior can guarantee quality work with every project it takes on.

(Above) The new Rhiss Interior showroom is packed with fine details that you might want to bring into your own home renovation, like these honeycomb mosaic tiles.

From left:
JERROLD LEE
 Design Consultant
WINCY TANG
 Creative Director
AMOS CHIN
 Design Consultant
RAY CHUA
 Senior Design Consultant

RHISS INTERIOR
Interpreting Perfection

RHISS INTERIOR PTE LTD

1104 Serangoon Road
 Singapore 328197
 T (65) 6392 2282
 F (65) 6392 2232

enquiry@rhissinterior.com
 hello@yamdesign.com.sg
 www.rhissinterior.com.sg
 www.yamdesign.com.sg

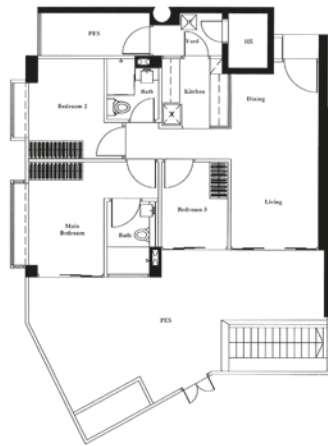


PROJECT TYPE 3-bedroom condominium
FLOOR AREA 1,891 sqft

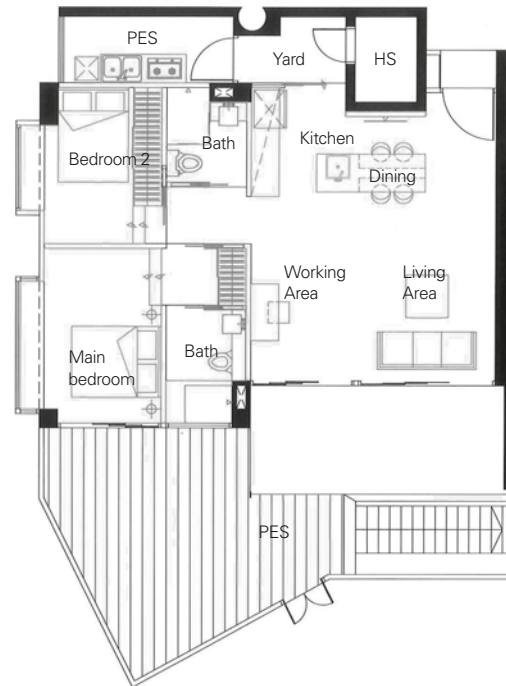
FLOOR PLANS

Rhiss Interior reconfigured the kitchen, creating both a dry, open-concept island and a wet kitchen, and designed built-in storage units.

BEFORE



AFTER



A home office that's understated in white

To replicate a crisp minimalist essence in this apartment, the designers from Rhiss Interior approached the colour palette and design features with restraint. They knew that the homeowners, who had just returned from Japan after living there for a while, appreciate the naturalness and simple aesthetics of minimalism. As white is the perfect colour to enhance wood grain accents, they used it lavishly in this condominium unit. This versatile colour scheme not only evokes a calming effect, but allowed the designers to easily embellish the space with natural-looking textures, too.

TEXT DISA TAN



Work-life balance

With a white canvas, most of the mix-and-match furnishings work well together in this modern minimalist setting. The female homeowner is a seamstress and often has clients come over for fittings or discussions. This space allows her to properly host them and make them feel at home.



Simple does it

With a double-height ceiling, which spans four metres tall, Wincy wanted to maximise the great feature by avoiding dropped ceiling fixtures. Instead, she put up track lighting for the living zone, while the workstation is anchored by an array of Edison lamps. This difference in lighting treatment offers a visual disparity amidst the all-white look.



For all occasions

The homeowners love to entertain, therefore a kitchen island was definitely an asset to their hosting duties. Creative director Wincy Tang chose a quartz countertop with pale graining and paired it with other natural-looking textures such as the wood grain vinyl flooring. Instead of a polished and gleaming quartz worktop, she opted for a matte finish as it would better fit the homeowners' low-maintenance needs.





Make room

With their existing floor plan not able to fulfil more of their storage needs, the homeowners looked to Wincy to create more storage compartments for their bulky outdoor equipment, which includes skiing gear. The designer cleverly incorporated a raised platform flush with the bay window seat and introduced more storage in the form of hidden compartments underneath that platform. Drawers also reside within the steps leading up to the bed.



Savvy sliders

Wincy installed pocket sliding doors for the entire home, including the wardrobe doors. This allows for more circulation space and also fulfils the white minimalist aesthetic completely. With the door shut seamlessly flush with the wall in the same white covering, this undisturbed flow in the colour scheme allows the other decorative elements in the room, such as the black-and-white artwork, to really pop.



Two-in-one

Evoking the Onsen qualities of a traditional Japanese bath, the walk-in bathtub made a more practical choice than the original Jacuzzi. The sunken bath not only also functions as a shower stall, it goes better with the subtle design scheme of the entire home.

“While the stated floor space is quite generous, half of it went to the outdoor patio so we had to be smart with the available indoor space.”

Wincy Tang, Creative Director, Rhiss Interior

