

Lookbox

annual 2013

annual 2013 | S\$12.00
8 886385 1900027

**GET
INSPIRED!**

**FABULOUS
INTERIORS FOR
HDB FLATS,
CONDOS AND
LANDED
PROPERTY**



40

Leading
Interior
Design
Firms

RHISS INTERIOR

WE CREATE YOUR DREAM HOME BY LISTENING TO YOUR NEEDS AND SUGGESTING OUR BEST SOLUTIONS.

Established in 2005, interior design and renovation company Rhiss Interior was set up by two professional directors to fulfil their dream of offering design with a difference. From renovation works to interior design proposals for landed and commercial projects, the firm ensures that each project, regardless of budget or size, features unique designs and satisfactory service. Indeed, its corporate values are inscribed in its name: Resoluteness in offering quality workmanship and fully personalised services to clients; Honesty in the relationships it builds with clients; Integrity in maintaining ethical and moral standards; Sophistication in the areas of ideas, resourcefulness and work efficiency; Service that is faultless. In the last couple of years, Rhiss Interior has garnered prestigious accolades, including Singapore's 2011 Outstanding Enterprise, 2011 Successful Entrepreneur and the Asia Pacific Brands Award (APBA).



FROM LEFT:
WINCY TANG
 PRINCIPAL DESIGNER
SAM TAN
 DESIGN CONSULTANT

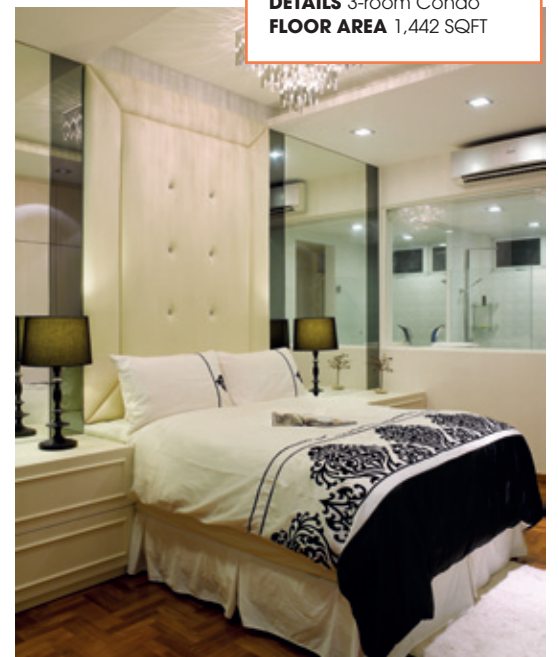
CREDITS: Bianco Marble Uassiq (DXO4316G) laminate, from Lamifak; Blue Armagos (LE18245) laminate, from Lam Chuuan; Bend Bunny lounge chair from Pomelo Home.



STYLE FILE 1
DETAILS Terrace House
FLOOR AREA 3,500 SQFT



STYLE FILE 3
DETAILS 2-bedroom Apartment
FLOOR AREA 1,098 SQFT



STYLE FILE 2
DETAILS 3-room Condo
FLOOR AREA 1,442 SQFT

A MODERN GLAMOUR

RHISS INTERIOR OVERHAULS THIS PENTHOUSE, TRANSFORMING IT INTO A SWANKY UPSCALE HOME



THE OLD MARBLE FLOORS WERE REPLACED WITH IMPORTED ONES, AND THE WALLS WERE TORN DOWN TO CREATE A CAPACIOUS SPACE.

More homeowners are becoming attuned with design trends, and this shows in their interior concepts. The homeowner of this apartment is no different. He wanted to convey a classy ambience with a modern slant. The prestigious location provided the luxury of a stunning architectural detail: a six-metre high window that looks out to the surrounding cityscape. Designer John Kow worked hand in hand with the homeowner to build the perfect interior befitting of the home.

DRAMATIC AND GLAMOROUS

John carried out extensive renovations throughout the home, successfully opening up the living and dining areas. The old marble floors were replaced with imported ones, and the walls were torn down to create a capacious space. "One of the son's room is situated behind the dining area," explains John adding that the door is concealed as part of the mirror feature wall. Illuminating the room is a ceiling feature with soft cove lighting that highlights the intricate chandelier hanging over the dining set.

To lend a sense of homeliness and cosiness to the penthouse, John included plenty of seating spaces in nooks and crannies throughout the home. One standout example is the area between the living and dining areas. Here, John placed a pair of chequered easy chairs and matched them with a backdrop of artwork against the wall. He finished the look with tinted mirror panels, marble surfaces, modern furniture and dramatic lighting.





THE MODERN GLAMOUR
THIS HOME EXUDES, IS BEFITTING OF BOTH
ITS OWNER AND ITS LOCATION.



HOT CHOCOLATE

When it came to the master bedroom, John decided to go all out. "Two bedrooms have been combined for the master bedroom, so we were able to include a walk-in wardrobe," he says. This luxurious closet is encased in glass, reminiscent of swanky fashion boutiques and enhanced with glamour lights for a dramatic effect.

With the newly opened space in the room, John included a stylish sofa facing the walk-in wardrobe. He then coupled it with a plush pile rug, essentially throwing together a cosy little corner that's perfect for late night reading and relaxation. The room also emphasises symmetry, especially with the matching bedside tables and a mirror wall that enhances the space.

Together with the homeowner, John has created the perfect home in this penthouse apartment. The modern glamour this home exudes, is befitting of both its owner and its location. ■



RHISS INTERIOR PTE LTD

1 Balestier Road Singapore 329670
T (65) 6392 2282 F (65) 6392 2232 E enquiry@rhisinterior.com
www.rhisinterior.com
www.rhisinterior.com.sg

RHISS INTERIOR
Interpreting Perfection